



Features

- Input voltage: DC24V
- CREE single color LED, color mixing well, excellent light performance and stability
- Can be connected with external controller, and achieve full-color effect
- Beam angle 10*60°, better light effect and longer shooting distance
- Aluminum PCB and backside with heat conductive adhesive tape, better heat diffusion

Application

Applied for full-color light boxes and projects

BLUEVIEW ELEC-OPTIC TECH CO.,LTD

Tel: +86-28-8148 0011 Fax: +86-28-8148 1258
Mail: sales@blueviewled.com Web.: www.blueviewled.com
Add: No.1000, Section 2, 2nd Konggang Road, Southwest
Aviation Industrial Development Zone, Chengdu, Sichuan, China.
Zip code: 610207

Specifications are subject to change without notice.
©Blueview™ 2016 – All rights reserved. Made in China.

2525 non-waterproof full-color rigid bar

Installation

Fixed by screw

Specifications

Part No.	QBPS-0509
Light color	Full-color
Wave length (nm)	R 620-625 G 520-525 B 465-470
Beam Angle(°)	10x60°
Luminous Flux(lm)	800
RA	/
Light Efficiency(lm/w)	42
Voltage	24V DC
Power(W/pcs)	≤19
Standard Serial connection Qty (pcs)	4
Max.Standard Serial connection Qty (pcs)	4
Operating Temperature(°C)	-25~+60
Storage Temperature(°C)	-25~+70

Remark:

- The test temperature is 25±2;
- Typical data as above, may some difference with reasonable fluctuation range.

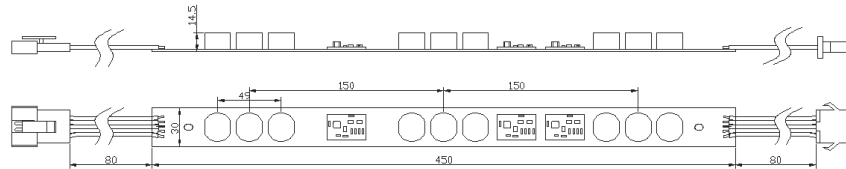
BLUEVIEW ELEC-OPTIC TECH CO.,LTD

Tel: +86-28-8148 0011 Fax: +86-28-8148 1258
 Mail: sales@blueviewled.com Web.: www.blueviewled.com
 Add: No.1000, Section 2, 2nd Konggang Road, Southwest
 Aviation Industrial Development Zone, Chengdu,Sichuan, China.
 Zip code: 610207

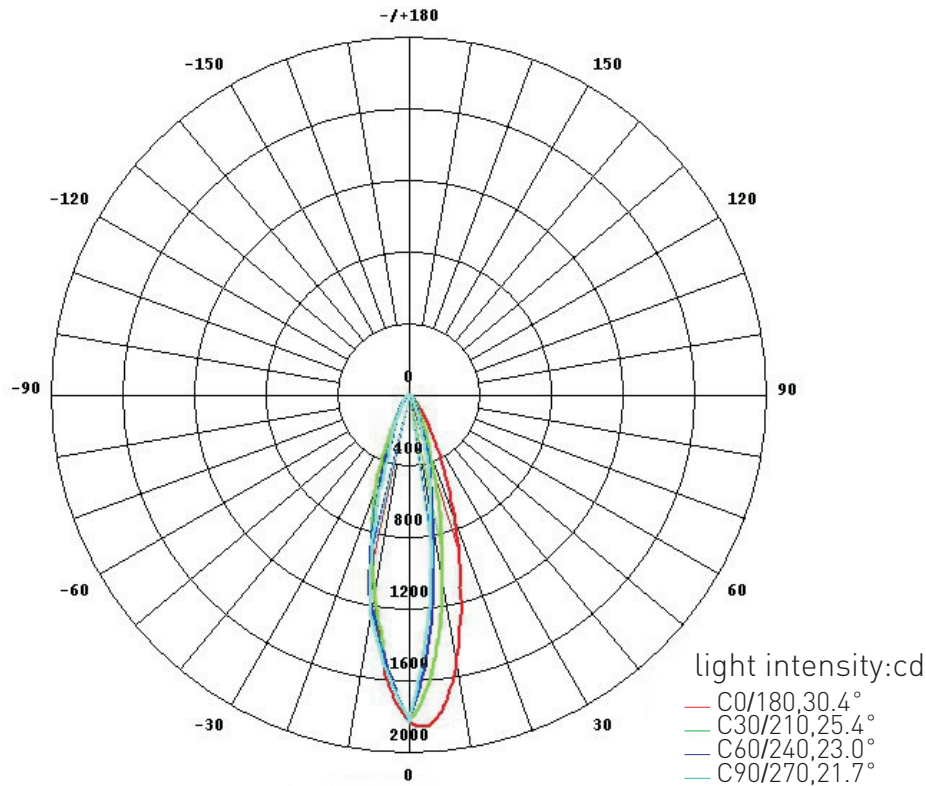
Specifications are subject to change without notice.
 ©Blueview™ 2016 – All rights reserved. Made in China.

Dimension

Unit:mm[in]



Luminous Intensity Distribution Diagram



THE AVERAGE BEAM ANGLE(50%):25.1 DEG

BLUEVIEW ELEC-OPTIC TECH CO.,LTD

Tel: +86-28-8148 0011 Fax: +86-28-8148 1258
 Mail: sales@blueviewled.com Web.: www.blueviewled.com
 Add: No.1000, Section 2, 2nd Konggang Road, Southwest
 Aviation Industrial Development Zone, Chengdu,Sichuan, China.
 Zip code: 610207

Specifications are subject to change without notice.
 ©Blueview™ 2016 – All rights reserved. Made in China.

2525 non-waterproof full-color rigid bar
Installation Data

Product Code	Light box Bottom	Lighting Method	Cover Mate rial	Lighting Distance	Depth of Light box	Bar Distance	Density
				m	cm	cm	pcs/m ²
QBPS - 0509	White Bottom	Two Sides Lighting	3mm Acrylic Board	1.2	12	-	① 2*2
					14	-	2*2
					16	-	2*2
				1.5	12	-	2*2
					14	-	2*2
					16	-	2*2
				1.8	16	-	2*2
					14	-	2*2
					16	-	2*2

Product Code	Light box Bottom	Lighting Method	Cover Mate rial	Lighting Distance	Depth of Light box	Bar Distance	Density
				m	cm	cm	pcs/m ²
QBPS - 0509	White Bottom	One Side Lighting	3mm Acrylic Board	1.2	12	-	① 1*2
					14	-	1*2
					16	-	1*2
				1.0	12	-	1*2
					14	-	1*2
					16	-	1*2
				0.8	16	-	1*2
					14	-	1*2
					16	-	1*2

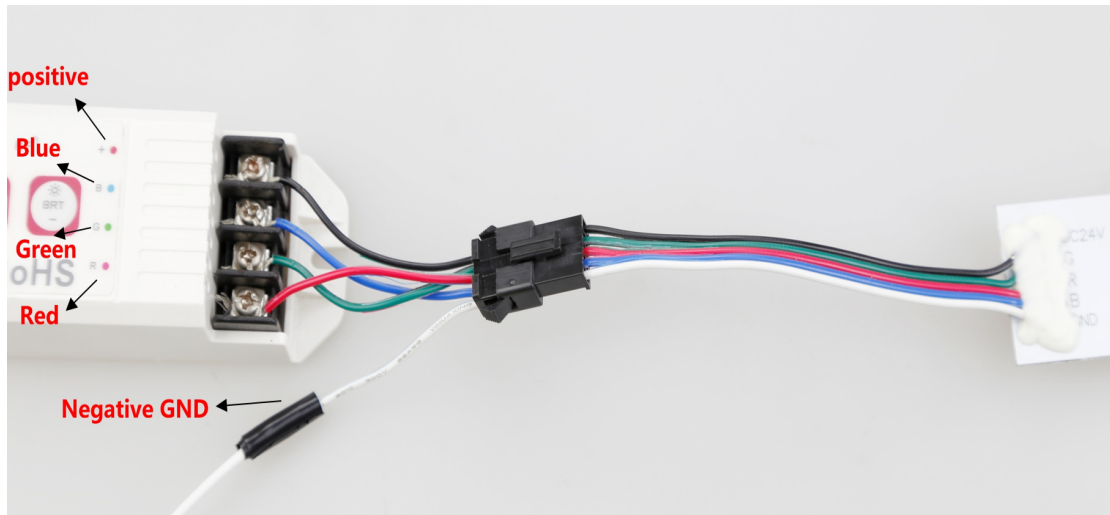
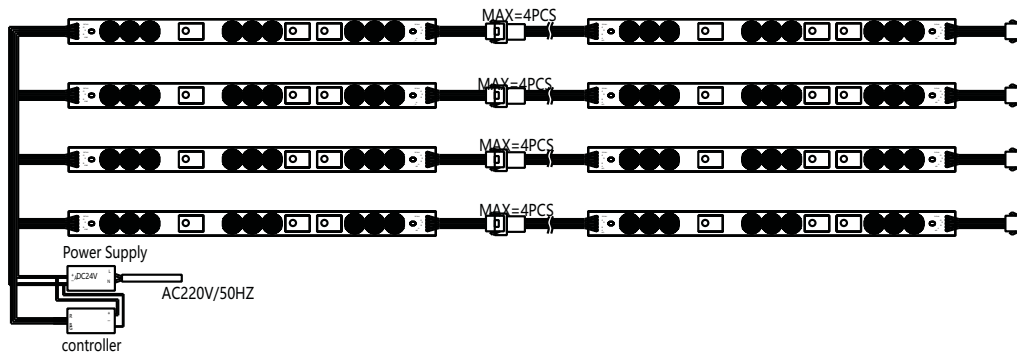
Note: ① means recommend bars quantity on the one side

BLUEVIEW ELEC-OPTIC TECH CO.,LTD

Tel: +86-28-8148 0011 Fax: +86-28-8148 1258
 Mail: sales@blueviewled.com Web.: www.blueviewled.com
 Add: No.1000, Section 2, 2nd Konggang Road, Southwest
 Aviation Industrial Development Zone, Chengdu,Sichuan, China.
 Zip code: 610207

Specifications are subject to change without notice.
 ©Blueview™ 2016 – All rights reserved. Made in China.

Installation Structure



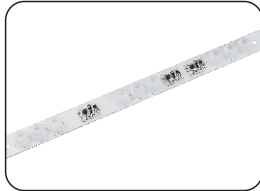
BLUEVIEW ELEC-OPTIC TECH CO.,LTD

Tel: +86-28-8148 0011 Fax: +86-28-8148 1258
 Mail: sales@blueviewled.com Web.: www.blueviewled.com
 Add: No.1000, Section 2, 2nd Konggang Road, Southwest
 Aviation Industrial Development Zone, Chengdu,Sichuan, China.
 Zip code: 610207

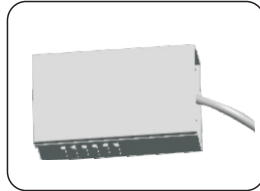
Specifications are subject to change without notice.
 © Blueview™ 2016 – All rights reserved. Made in China.

2525 non-waterproof full-color rigid bar

Tools



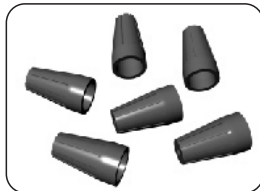
QBPS



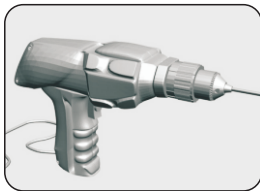
24V DC Power Supply



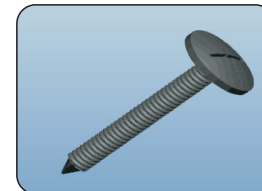
Pliers



Connector

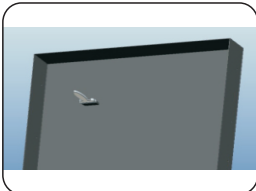


Electric Drill

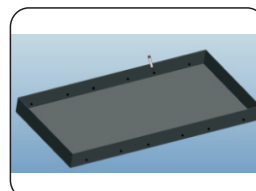


Self-tapping Screw

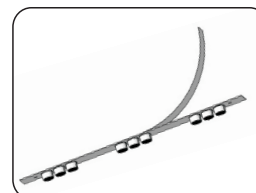
Installation



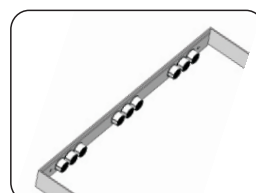
1. Clean the installation surface and ensure the surface is clean



2. On the two sides of the light box, mark the position where fixed mounting card will be with a marker



3. Tear off the off-form paper on the back of the product



4. Use a self-tapping screw to lock the product at the marker and properly connect the power supply and the controller

Note: Screw must be avoided from the soldering pad in case of short circuit

BLUEVIEW ELEC-OPTIC TECH CO.,LTD

Tel: +86-28-8148 0011 Fax: +86-28-8148 1258
 Mail: sales@blueviewled.com Web.: www.blueviewled.com
 Add: No.1000, Section 2, 2nd Konggang Road, Southwest
 Aviation Industrial Development Zone, Chengdu, Sichuan, China.
 Zip code: 610207

Specifications are subject to change without notice.
 ©Blueview™ 2016 – All rights reserved. Made in China.

Package



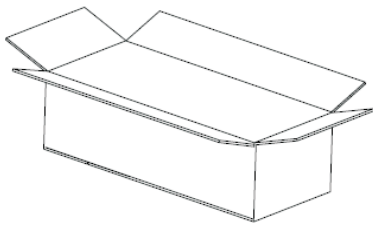
Put the product into the plastic bag



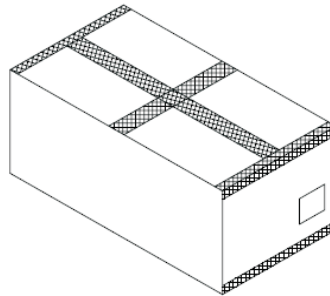
Sealed both ends of the bag



Put the products into the carton and separated the layer by foam, then seal it with sealing tape, stick the label at the side of the carton



Stick packing list on carton



Packing details:

1. Packaged by PE transparent pocket, with normal export carton;
2. Packing size: 550*400*340mm;
- 3.

Part No.	Product size	Qty per carton	Net weight (NW/kg)	Gross weight (GW/kg)
QBPS-0509	450*30	100	10.7(1±10%)KG	12.2(1±10%)KG

4. Above mentioned quantity and weight are based on above packing method only, quantity and weight differs when applying other packing, please refer to actual situation.

BLUEVIEW ELEC-OPTIC TECH CO.,LTD

Tel: +86-28-8148 0011 Fax: +86-28-8148 1258
 Mail: sales@blueviewled.com Web.: www.blueviewled.com
 Add: No.1000, Section 2, 2nd Konggang Road, Southwest
 Aviation Industrial Development Zone, Chengdu, Sichuan, China.
 Zip code: 610207

Specifications are subject to change without notice.
 ©Blueview™ 2016 – All rights reserved. Made in China.